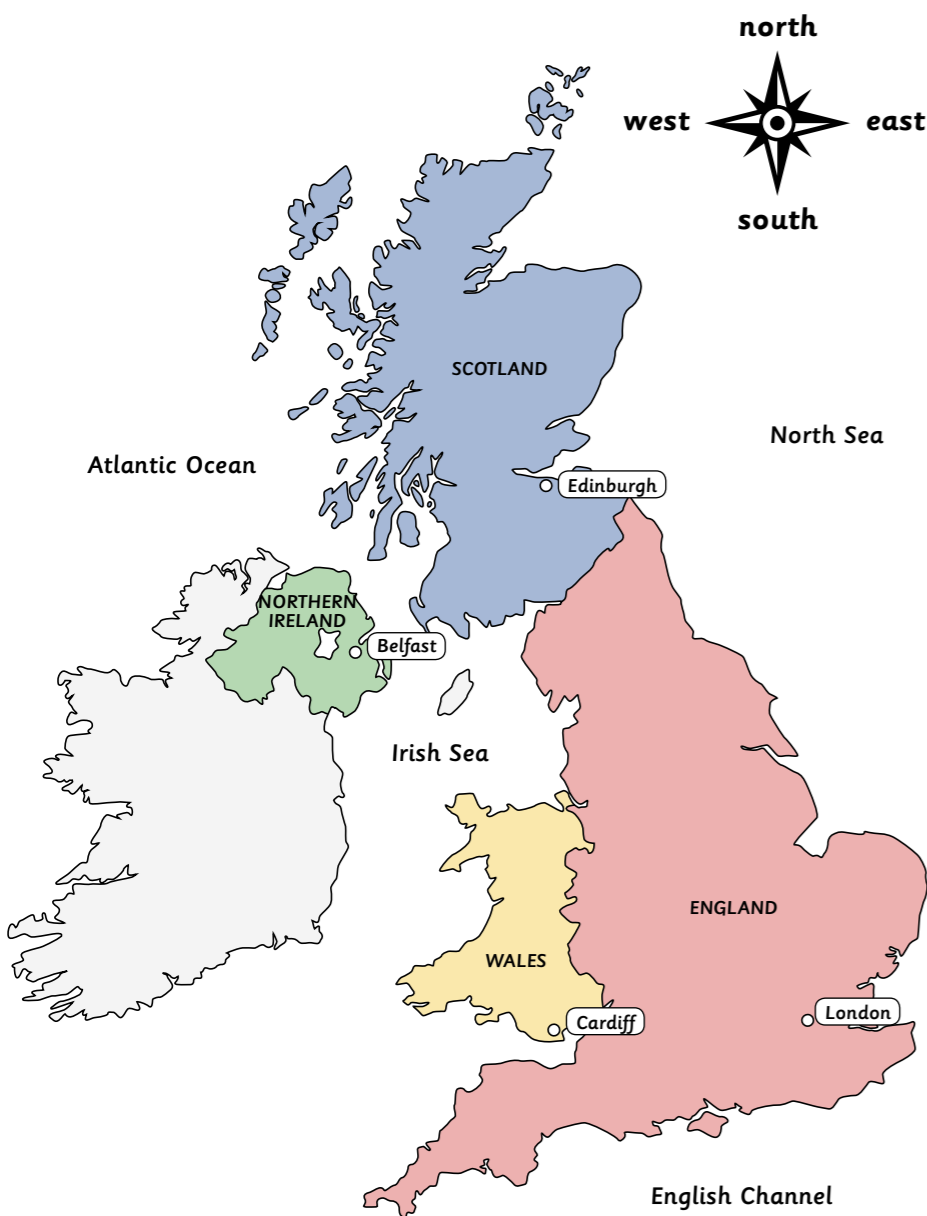


# Bright Lights, Big City

## United Kingdom

The United Kingdom is in Europe. It is made up of England, Northern Ireland, Scotland and Wales. The capital city of the United Kingdom is London.



## Physical features

The landscape of the United Kingdom has many different physical features.



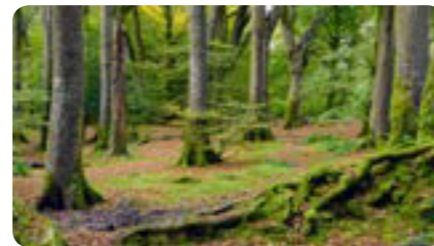
river



flatland



mountain



forest

## Weather

The United Kingdom has four seasons. These are spring, summer, autumn and winter. The weather can be very warm and sunny in the summer. In the winter, the weather can be cold and snowy. There can also be lots of rain all year round.



spring



summer



autumn



winter

## London

As well as being the capital city of the United Kingdom, London is also the capital city of England. It is the largest city in the United Kingdom. Over eight million people live in London. The River Thames is the main river that runs through the city. Other rivers include the River Lea and the River Roding.

## Landmarks

A landmark is a feature, such as a building, that can be seen from far away. A landmark can help you to describe your location. London has many famous landmarks.



Houses of Parliament



Tower Bridge



Royal Albert Hall



London Eye



St Paul's Cathedral



The Gherkin



# Great Fire of London

Thomas Farriner was the baker of King Charles II. His bakery shop was on Pudding Lane in London. A spark from one of his ovens started a terrible fire on Sunday 2nd September 1666. It was known as the Great Fire of London.

## Timeline

**Sunday** The fire spread along Pudding Lane. King Charles II asked for wooden houses to be knocked down to make gaps in the streets to stop the fire from spreading. His plan didn't work.

**Monday** Many people packed their belongings and left the city. The fire reached the Tower of London but the tower didn't catch fire.

**Tuesday** The main street in London, Cheapside, caught fire. The fire reached St Paul's Cathedral and burned it to the ground.

**Wednesday** The wind blew the fire towards the river. The fire reached the river and died down.

**Thursday** Hundreds of soldiers started to clean the streets and put out small fires that were still burning.

**Friday** The fire was out.

# HM Queen Elizabeth II

Elizabeth II is the monarch of the United Kingdom. She was born in 1926 and became queen in 1952. She was married to Prince Philip and has a large family. She lives in Buckingham Palace in London. The Queen is very important. She visits charities and schools in the United Kingdom and welcomes world leaders to Buckingham Palace.



The Queen meets lots of people

## Life in a city

A city is a large, busy settlement where lots of people live and work. A city usually has a cathedral, a river, important buildings and offices where people work. There are lots of things to see and do in a city. There are many shops and restaurants to visit.



Aerial view of London

# Glossary

<b>bakery</b>	A place where bread, cakes and pastries are made and sold.
<b>capital city</b>	A city that is home to the government and ruler of a country.
<b>cathedral</b>	A large, important church.
<b>city</b>	A large town, often with a cathedral.
<b>country</b>	A large area of land that has its own government.
<b>landmark</b>	A feature, such as a building or statue which can be seen from far away.
<b>physical feature</b>	Naturally-formed features on the surface of the Earth.
<b>queen</b>	A female monarch or the wife of a king.
<b>settlement</b>	A place where people live and work.

