

**English**

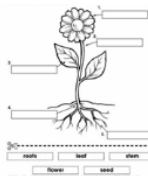
Last week, you wrote a description of the 'Enchanted Woodland' setting. This week, you are going to write a description of a character who might live in that setting.

1. Choose one of the characters below, or draw your own character in your home learning book. Use different coloured pencils to describe what they look like and what they do.
2. Use the words you have written to describe your character, make these into a sentence. Remember to use descriptive word. E.g. He has **long, brown** fur. You could even join two sentences together using the conjunction 'and'.
3. Now you have written your sentences, can you write a description of the character. Remember to use your sentences to help you. (There is a character description below, to give you an idea of what it could be like)

Remember to use capital letters, finger spaces and full stops in your writing. Also, don't forget to use your 'Common Exception word mat to help you with the spelling of these words.

**Science**

1. Can you name the parts of the plant below? Sketch it in your writing book, and label each part. Make sure to include the roots, seed, leaf, stem, and flower! (Look below for an enlarged version)



2. Read the "Parts of Plants" poem. Can you make a list of the different parts of a plant, as well as their **function** (what each part does)? (Look below for an enlarged version)



3. Plants are similar to animals because they are living things. They also need a few specific things in order to survive. Using your writing book, make a list of things that plants need in order to survive!

**Maths**

Try these mathematics word problems.

1. Adam has 8 pens. Ranvier has 10 pens. How many pens do they have altogether? Can you find some pens in your house to help you find out the answer?
2. There are 20 biscuits on a plate. 7 biscuits get eaten. How many are left now? If you have any biscuits in your house, you could use them! If not, try drawing the biscuits.
3. 5 children are on a bus. The bus stops, and 5 more get on. It goes to Slough High Street, where 2 children get off. How many children are still on the bus? You could use beads or pasta to represent the people!

When you've finished these questions, why not try writing your own?

**Topic**

1. What are the names of these trees? See if you can identify each tree and match them to their names.



Pine tree

Beech tree

Holly tree

2. Watch a video about animals living in the woodland habitat. Tell an adult what some of their names are. <https://www.youtube.com/watch?v=8vTrD13y8G0>
3. Take a woodland quiz to learn about animals and their habitat.

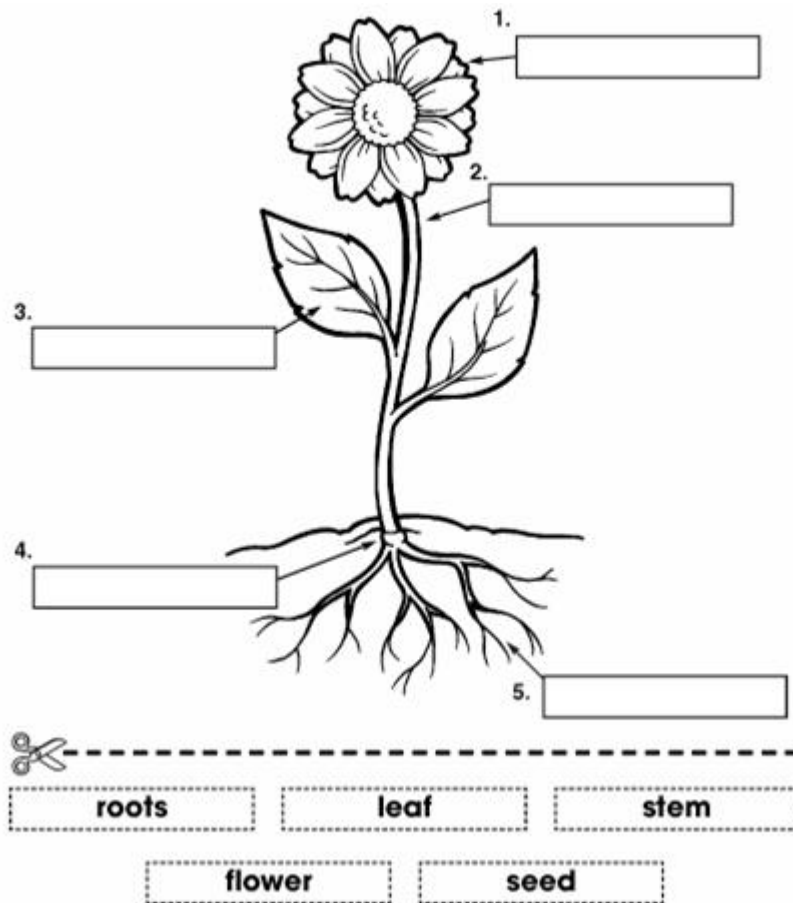
<https://www.educationquizzes.com/ks1/science/living-things-woodland-habitat/>

English Activity 2:



shutterstock.com • 107248649

Science Activity 1:



Science Activity 2:

# Parts of Plants

(Tune: Muffin Man)

Oh, do you know the parts of plants,  
The parts of plants, the parts of plants?  
Do you know the parts of plants?  
That make them grow and grow?

The roots, they hold the plant in place,  
The plant in place, the plant in place.  
The roots, they hold the plant in place  
Soak up food and water, too.

The stem moves water up the plant,  
Up the plant, up the plant.  
The stem moves water up the plant  
Brings water to the leaves.

The leaves soak up the rays of sun,  
The rays of sun, the rays of sun.  
The leaves soak up the rays of sun,  
And help the plant make food.

The flower grows into a fruit,  
Into a fruit, into a fruit.  
The flower grows into a fruit,  
Which holds the tiny seeds.

Now you know the parts of plants,  
The parts of plants, the parts of plants,  
Now you know the parts of plants,  
That make them grow and grow .

