

# Dinosaur Planet

## Living things

Animals are living things. Living things need food, water, air and shelter to survive.

## Dinosaurs

Dinosaurs were once living things. They lived on Earth over 200 million years ago before becoming extinct.



Tyrannosaurus



Diplodocus



Velociraptor



Stegosaurus

## Reptiles

Dinosaurs were reptiles. Reptiles lay eggs and are cold-blooded so they need to sit in the sunshine to get warm. Other reptiles include snakes, lizards, crocodiles, turtles and tortoises.

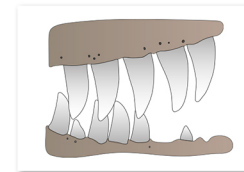
## Dinosaur sizes

Dinosaurs were all different shapes and sizes. Some were huge, such as the *Diplodocus*, and others were tiny, such as the *Compsognathus*.

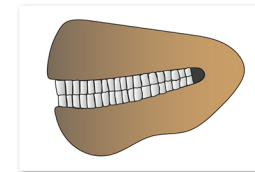
	Name	Length	Height (at the hip)
	<i>Compsognathus</i>	1m	25cm
	<i>Velociraptor</i>	2m	50cm
	<i>Stegosaurus</i>	9m	3m
	<i>Triceratops</i>	9m	3m
	<i>Parasaurolophus</i>	11m	3m
	<i>Tyrannosaurus</i>	12m	4m
	<i>Apatosaurus</i>	21m	5m
	<i>Diplodocus</i>	26m	5m

## Dinosaur teeth

Dinosaurs like the *Tyrannosaurus* were carnivores. They had sharp, pointed teeth to cut and tear meat. Dinosaurs like the *Diplodocus* were herbivores. They had flat teeth to grind and chew plants.



carnivore teeth



herbivore teeth

## Fossils

Fossils are found in rock. They are the remains or traces of plants and animals that lived millions of years ago. Palaeontologists are people who study fossils. Fossils can tell us about animals and plants that lived millions of years ago.



fossilised fern



fossilised fish



fossilised dinosaur



fossilised shell

## Animal groups

Animals can be sorted into six different groups. These are mammals, amphibians, birds, fish, reptiles and invertebrates.



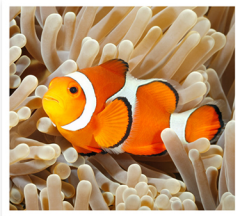
Brown bears are mammals.



Frogs are amphibians.



Kingfishers are birds.



Clownfish are fish.



Tortoises are reptiles.



Snails are invertebrates.

## Mary Anning

Mary Anning was a British palaeontologist, who was born in 1799. She made many important fossil discoveries.



Portrait of Mary Anning

## Important discoveries

In 1811, Mary found the fossilised skeleton of a dinosaur named an *Ichthyosaurus* and in 1823 she found a fossilised *Plesiosaurus* skeleton. Many of Mary's fossils are now on display in the Natural History Museum in London.



*Plesiosaurus* skeleton

## Extinction

Living things become extinct when there are no more of them alive. Dinosaurs became extinct around 65 million years ago. Other animals, like the dodo and the Western black rhino, are now extinct.



dodo



Western black rhino

## Glossary

<b>carnivore</b>	An animal that eats other animals.
<b>dinosaur</b>	Reptiles that lived a long time ago.
<b>fossil</b>	The remains or traces of a once living plant or animal that are preserved as rock.
<b>herbivore</b>	An animal that eats plants.
<b>invertebrate</b>	Animals, such as insects, without a backbone or bony skeleton.
<b>omnivore</b>	An animal that eats both plants and animals.
<b>palaeontologist</b>	A person who studies fossils.